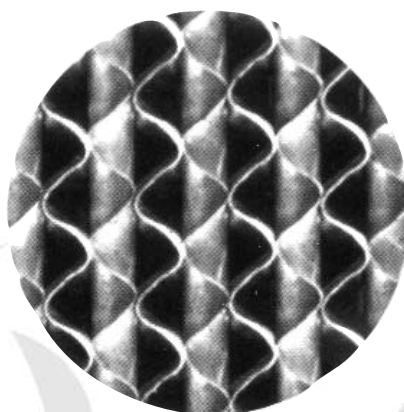
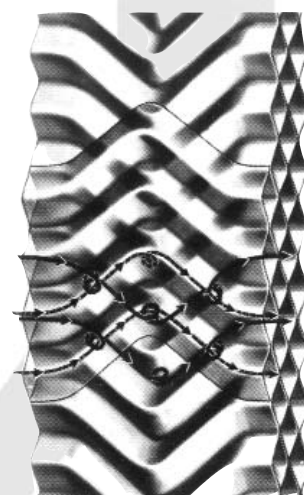




## GW Fixed Panel Air Filter



Section of filter media  
(approx. actual size)



Cross section of filter media  
showing airflow pattern

### Applications

**Grease filter:** the GW air filter is a light weight regenerable or washable panel unit especially designed for use in cooking exhaust systems. As acids present in the trapped greases of kitchen exhausts corrode ordinary steel, GW filters are constructed of acid-resistant aluminium throughout.

**Air Filter:** when treated with a special adhesive oil, the GW filter is also suitable for use as a general-purpose air filter for small applications.

**Low resistance:** in both applications, the honeycomb media design provides extremely low resistance to airflow as well as ease of cleaning.

### Description

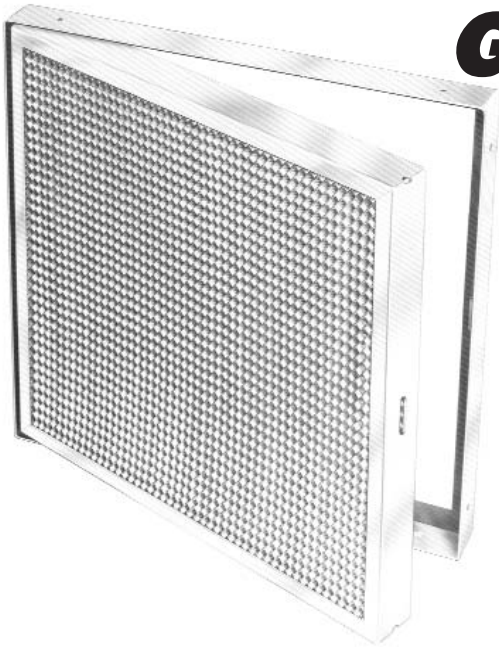
**Grease filter:** the filter media consists of 50mm thick honeycomb of specially corrugated light gauge aluminium sheet enclosed in an aluminium frame. Large, smooth-walled passages eliminate the clogging prevalent in other filters and the high turbulence created by the internal criss-crossing airstreams brings grease particles in contact with the metal surface where they adhere.

**Air filter:** the honeycomb media splits the incoming air into approximately 27,000 separate airstreams per square metre of filter surface. It is

available in nominal thicknesses of 50mm and 100mm. Before leaving the media, each airstream crosses a similar airstream several times at right angles, creating a turbulence which, combined with changes in airflow direction, brings entrained dust particles in contact with the adhesive oil coated surfaces of the media where they adhere. The full media thickness is effectively used for extracting foreign matter from the air. This gives the filter high efficiency to large airborne particles together with exceptionally low resistance and large dust-holding capacity.

Made in  
Australia

**AES Environmental**



# GW Filter

## Fixed panel air filter

### Installation

Holding frames are available for GW filters to enable easy installation of a number of cells in banks. Each frame has a gasket sealing strip to eliminate air leakage and quick-acting spring clips to hold the cell securely in place.

Grease filters: the filter must always be installed with its face at not more than 30 degrees from the vertical to minimise the possibility of grease dripping off the filter face. Because of the 'lay' of the media in the cell, they must always be installed with the slots on the vertical sides

### Maintenance/service

Email Air Handling provides full filter maintenance, exchange service and servicing facilities in all major population centres of Australia. Grease filters must be cleaned regularly to minimise the possibility of collected grease dropping back in semi-liquid form off the cell. Cleaners containing caustic must not be used as they will attack the aluminium from which the unit is made.

### Engineering and performance data

Mounting frame size (mm)			Rated Cap. m <sup>3</sup> /s	Part Numbers			Actual cell size (mm)			Cell Weight (kg)
Width	Height	Depth		Frame	Hardware Kit	Filter Cell	Width	Height	Depth	
406	267	51	0.198	1516-0703/4	1516-0538/4	1516-0704/5	394	254	51	1.5
318	318	51	0.203	1516-0703/2	1516-0538/4	1516-0704/2	305	305	51	1.4
508	267	51	0.255	1516-0703/6	1516-0538/4	1516-0704/8	495	254	51	2.3
838	267	51	0.434	1516-0703/14	1516-0538/4	1516-0704/20	826	254	51	2.7
508	406	51	0.453	1516-0703/8	1516-0538/4	1516-0704/11	495	394	51	2.5
508	508	51	0.566	1516-0703/10	1516-0538/4	1516-0704/14	495	495	51	2.9
635	406	51	0.566	1516-0703/12	1516-0538/4	1516-0704/17	622	394	51	3
1143	267	51	0.599	1516-0703/20	1516-0538/4	1516-0704/29	1130	254	51	3.6
635	508	51	0.722	1516-0703/16	1516-0538/4	1516-0704/23	622	495	51	3.6
1448	267	51	0.769	1516-0703/22	1516-0538/4	1516-0704/32	1435	254	51	4.5
610	610	51	0.835	1516-0703/24	1516-0538/4	1516-0704/35	597	597	51	4.2
762	508	51	0.864	1516-0703/18	1516-0538/4	1516-0704/26	749	495	51	4.2

### Addresses

Sydney: Tel 1300 550 116 Fax 1300 550 117

Address: 19 Saggartfield road Minto NSW 2566 Email: Sales@aesenvironmental.com.au



[www.aesenvironmental.com.au](http://www.aesenvironmental.com.au)



© 2011 AES Environmental  
AESE

**National Tel. Hotline 1300 550 116**

**National Fax 1300 550 117**